

# SUNCREST ACRES SECOND ADDITION TO THE CITY OF McPHERSON, KANSAS.

Re-Record  
3402  
State of Kansas, McPherson Co., SS  
This instrument was filed for record on the 15th day of August, 1977 at 4:00 P.M. and duly recorded in book Plat A page 38  
Rochelle Nelson  
Register of Deeds



3343  
State of Kansas, McPherson Co., SS  
This instrument was filed for record on the 11th day of August, 1977 at 11:15 A.M. and duly recorded in book Plat A page 38  
Rochelle Nelson  
Register of Deeds

**OWNER'S CERTIFICATION AND DEDICATION:**

STATE OF KANSAS }  
COUNTY OF McPHERSON } SS  
THIS IS TO CERTIFY THAT THE UNDERSIGNED OWNERS OF THE LAND DESCRIBED IN THE SURVEYOR'S CERTIFICATE, HAVE CAUSED THE SAME TO BE SURVEYED AND SUBDIVIDED ON THE ACCOMPANYING PLAT INTO LOTS, BLOCKS, STREETS AND OTHER PUBLIC WAYS UNDER THE NAME OF "SUNCREST ACRES SECOND ADDITION" TO THE CITY OF McPHERSON, KANSAS; THAT ALL STREETS, EASEMENTS AND PUBLIC GROUNDS AS DENOTED ON THE PLAT ARE HEREBY DEDICATED TO AND FOR THE USE OF THE PUBLIC FOR THE PURPOSE OF CONSTRUCTING, OPERATING, MAINTAINING AND REPAIRING PUBLIC IMPROVEMENTS; AND FURTHER THAT THE LAND CONTAINED HEREIN IS HELD AND SHALL BE CONVEYED SUBJECT TO ANY APPLICABLE RESTRICTIONS, RESERVATIONS, AND COVENANTS NOW ON FILE OR HEREFTER FILED IN THE OFFICE OF THE REGISTER OF DEEDS OF McPHERSON COUNTY, KANSAS.

PEOPLES BANK AND TRUST COMPANY  
TRUST NO. 151 FOR STEPHEN KENT THOMPSON  
TRUST NO. 152 FOR GAYLAND LEE THOMPSON

DATE SIGNED: June 8, 1977  
Stan Sargent, President & Trust Officer

**NOTARY CERTIFICATE:**

STATE OF KANSAS }  
COUNTY OF McPHERSON } SS  
THE FOREGOING INSTRUMENT WAS ACKNOWLEDGED BEFORE ME THIS 8th DAY OF June, 1977, BY Stan Sargent

My Commission Expires: 7/16/1979

Notary Public  
Thomas L. Van Cuyt

**SURVEYOR'S CERTIFICATE AND DESCRIPTION:**

I, THE UNDERSIGNED, LICENSED PROFESSIONAL LAND SURVEYOR OF THE STATE OF KANSAS, DO HEREBY CERTIFY THAT THE FOLLOWING DESCRIBED TRACT OF LAND WAS SURVEYED BY ME AND THE ACCOMPANYING FINAL PLAT PREPARED AND THAT ALL LOT, BLOCK AND SUBDIVISION CORNERS ARE PERMANENTLY MARKED ACCORDING TO GOVERNING BODY REGULATIONS AND THAT 12 POSITIONS ARE CORRECTLY SHOWN ON THE ACCOMPANYING PLAT TO THE BEST OF MY KNOWLEDGE AND BELIEF:  
COMMENCING AT THE S.W. CORNER OF THE SW 1/4 OF SECTION 16, T.19S., R.3W. OF THE 6TH P.M.; THENCE EAST ALONG THE SOUTH LINE OF SAID SW 1/4 350.05 FEET FOR A PLACE OF BEGINNING; THENCE WITH A DEFLECTION ANGLE 88°59'10" LEFT-NORTH PARALLEL WITH THE WEST LINE OF SAID SW 1/4 335.38 FT.; THENCE WITH A DEFLECTION ANGLE 22°30' RIGHT-NORTH-NORTHEAST ON A CURVE HAVING A RADIUS OF 144.85 FT. AND AN ARC LENGTH OF 113.76 FT.; THENCE WITH A DEFLECTION ANGLE 22°30' RIGHT-NORTHEAST 60.0 FT.; THENCE WITH A DEFLECTION ANGLE 90°00' LEFT-NORTHWEST 60.0 FT.; THENCE WITH A DEFLECTION ANGLE 22°30' RIGHT-NORTH-NORTHWEST ON A CURVE HAVING A RADIUS OF 144.85 FT. AND AN ARC LENGTH OF 113.76 FT.; THENCE WITH A DEFLECTION ANGLE 22°30' RIGHT-NORTH PARALLEL WITH THE WEST LINE OF SAID SW 1/4 691.32 FT. TO THE NORTH LINE OF THE SW 1/4 OF SAID SW 1/4; THENCE WITH A DEFLECTION ANGLE 88°51' RIGHT-EAST ALONG THE NORTH LINE OF THE SW 1/4 OF SAID SW 1/4 435.09 FT.; THENCE WITH A DEFLECTION ANGLE 91°09' RIGHT-SOUTH PARALLEL WITH THE WEST LINE OF SAID SW 1/4 671.61 FT.; THENCE WITH A DEFLECTION ANGLE 45°00' RIGHT-SOUTHWEST 438.41 FT.; THENCE WITH A DEFLECTION ANGLE 45°00' LEFT-SOUTH PARALLEL WITH THE WEST LINE OF SAID SW 1/4 341.39 FT. TO THE SOUTH LINE OF SAID SW 1/4; THENCE WITH A DEFLECTION ANGLE 88°59'10" RIGHT-WEST ALONG THE SOUTH LINE OF SAID SW 1/4 125.02 FT. TO THE PLACE OF BEGINNING CONTAINING 9.45 ACRES IN McPHERSON COUNTY, KANSAS, SUBJECT TO A ROAD RIGHT-OF-WAY EASEMENT ACROSS THE SOUTH 400 FEET THEREOF.

SIGNED May 20, 1977.

Gene D. Sickmon  
LAND SURVEYOR

**PLANNING COMMISSION CERTIFICATE:**

STATE OF KANSAS }  
COUNTY OF McPHERSON } SS  
THIS PLAT WAS APPROVED BY THE McPHERSON CITY PLANNING COMMISSION ON June 14, 1977, AND WAS RECOMMENDED FOR APPROVAL BY THE GOVERNING BODY OF THE CITY OF McPHERSON, KANSAS.

SIGNED June 14, 1977.

William W. Hobbs  
CHAIRMAN  
Melvin J. Pottum  
SECRETARY

**SIDEWALKS:**

A SIDEWALK SHALL BE INSTALLED ONE (1) FOOT FROM PROPERTY LINE IN THE STREET RIGHT-OF-WAY IN ACCORDANCE WITH CITY SPECIFICATIONS AND GRADE ON THE FOLLOWING: LOTS 1 THROUGH 13, BLOCK 1; LOTS 1 THROUGH 6, BLOCK 2 AND LOTS 1 THROUGH 5, BLOCK 3. THIS SIDEWALK CONSTRUCTION SHALL BE CONSTRUCTION WHEN THE HOUSING IMPROVEMENT IS MADE ON THE LOTS.

**COUNTY CLERK AND CITY CLERK CERTIFICATE:**

STATE OF KANSAS }  
COUNTY OF McPHERSON } SS  
CITY OF McPHERSON

WE, THE UNDERSIGNED, COUNTY CLERK OF McPHERSON COUNTY, KANSAS, AND CITY CLERK OF THE CITY OF McPHERSON, KANSAS, WITHIN OUR RESPECTIVE JURISDICTIONS, DO HEREBY CERTIFY THAT AT THE DATE OF THIS CERTIFICATE, ALL CURRENTLY DUE AND OWING TAXES AND SPECIAL ASSESSMENTS OF ANY KIND ASSESSED AGAINST ANY OF THE LAND INCLUDED IN THIS PLAT, HAVE BEEN PAID.

DATE SIGNED: June 20, 1977  
Margie Hill  
COUNTY CLERK

DATE SIGNED: June 20, 1977  
CITY CLERK

**CERTIFICATE AS TO CITY PUBLIC IMPROVEMENTS:**

STATE OF KANSAS }  
CITY OF McPHERSON } SS

WE, THE UNDERSIGNED, DO HEREBY CERTIFY THAT THE REQUIRED GUARANTEES ARE POSTED WITH THE CITY FOR THE COMPLETION OF THE IMPROVEMENTS COVERING ALL STREETS, STORM SEWERS, SANITARY SEWER SYSTEM, AND DOMESTIC WATER SUPPLY AND DISTRIBUTION SYSTEM PERTAINING TO THE SUBJECT PLAT AND NOT UNDER OTHER FEDERAL, STATE OR COUNTY COMPLETION OBLIGATIONS; WHICH ARE BASED ON A LICENSED ENGINEER'S PLANS AND SPECIFICATIONS; AND WHICH ARE APPROVED BY ALL PUBLIC AUTHORITIES HAVING JURISDICTION.

DATE SIGNED: June 13, 1977  
DATE SIGNED: 6-13-1977

City Engineer  
CITY OF McPHERSON, KANSAS  
GENERAL MANAGER OF BOARD OF PUBLIC UTILITIES, CITY OF McPHERSON, KANSAS.

**GOVERNING BODY CERTIFICATE:**

STATE OF KANSAS }  
CITY OF McPHERSON } SS

THIS PLAT APPROVED AND ALL DEDICATIONS SHOWN HEREON, IF ANY, ARE HEREBY ACCEPTED BY THE GOVERNING BODY OF THE CITY OF McPHERSON, KANSAS, ON June 20, 1977.

ATTEST: Mayor  
CITY CLERK

**COUNTY COMMISSIONERS' CERTIFICATE:**

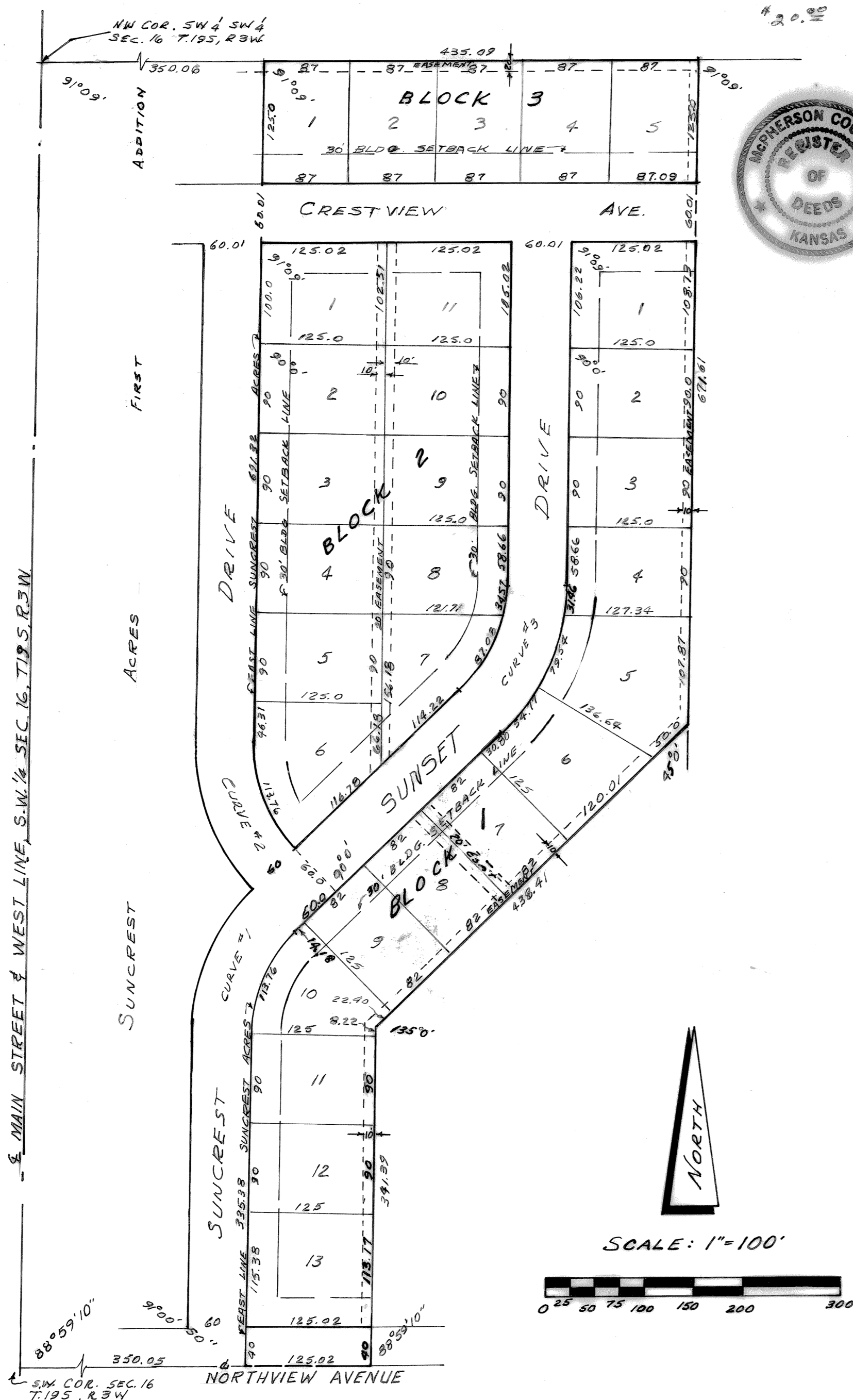
STATE OF KANSAS }  
COUNTY OF McPHERSON } SS

THE DEDICATIONS SHOWN ON THIS PLAT ARE HEREBY ACCEPTED BY THE BOARD OF COUNTY COMMISSIONERS, McPHERSON COUNTY, KANSAS ON June 20, 1977.

Commission Chairman  
ATTEST: County Clerk Deputy

ENTERED ON TRANSFER RECORD ON June 20, 1977.

**REGISTER OF DEEDS CERTIFICATE:**



**Curve Data:**

Curve #1	Curve #2
Δ = 45°0'	Δ = 45°0'
D = 32°47'47"	D = 31°38'36"
T = 72.43'	T = 75.0'
R = 174.85'	R = 181.07'
L = 137.33'	L = 142.21'